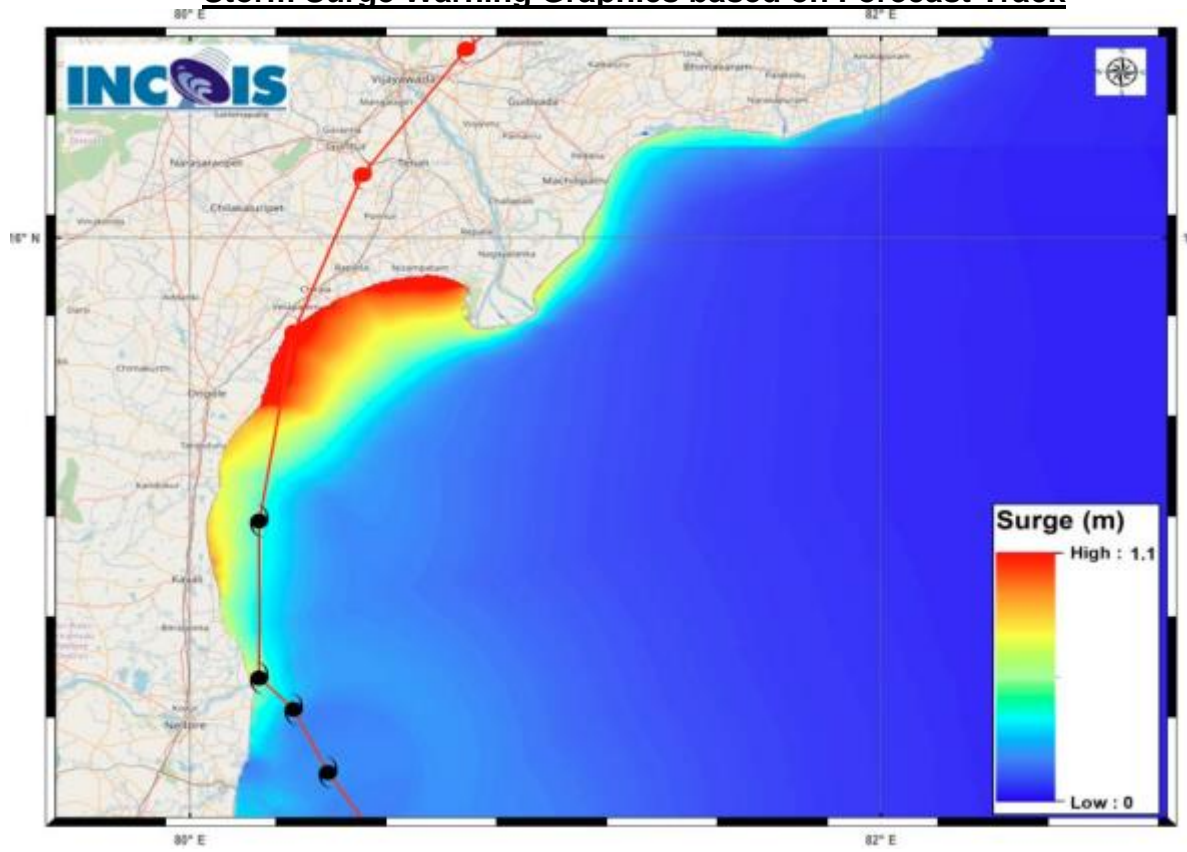


STORM SURGE GUIDANCE BASED ON 0300UTC OF 5th DECEMBER, 2023

STORM SURGE GUIDANCE FOR INDIA:

Storm surge of about 1-1.5 meter above astronomical tide likely to inundate south Coastal Andhra Pradesh districts at the time of landfall.

Storm Surge Warning Graphics based on Forecast Track



STORM SURGE HEIGHT INFORMATION:

* The below listed surge heights are over and above astronomical tide.

MANDAL/TALUK	DISTRICT	STATE/UNION TERRITORY	NEAREST PLACE OF HABITATION	STORM SURGE (m) *	EXPECTED INUNDATION EXTENT (km)
Repalle	Guntur	Andhra Pradesh	Repalle	0.5-1.1	Upto 0.23
Sullurpeta	Nellore	Andhra Pradesh	Duggaraja Patnam	0.5-1.0	Upto 0.24
Ongole	Prakasam	Andhra Pradesh	Kanuparthi	0.4-0.0	Upto 0.16
Bapatla	Guntur	Andhra Pradesh	Bapatla	0.6-0.8	Upto 0.19
Chirala	Prakasam	Andhra Pradesh	Kotha Peta (Rural)	0.6-0.8	Upto 0.17
Kovvur	Nellore	Andhra Pradesh	Isakapalle	0.4-0.7	Upto 0.13